

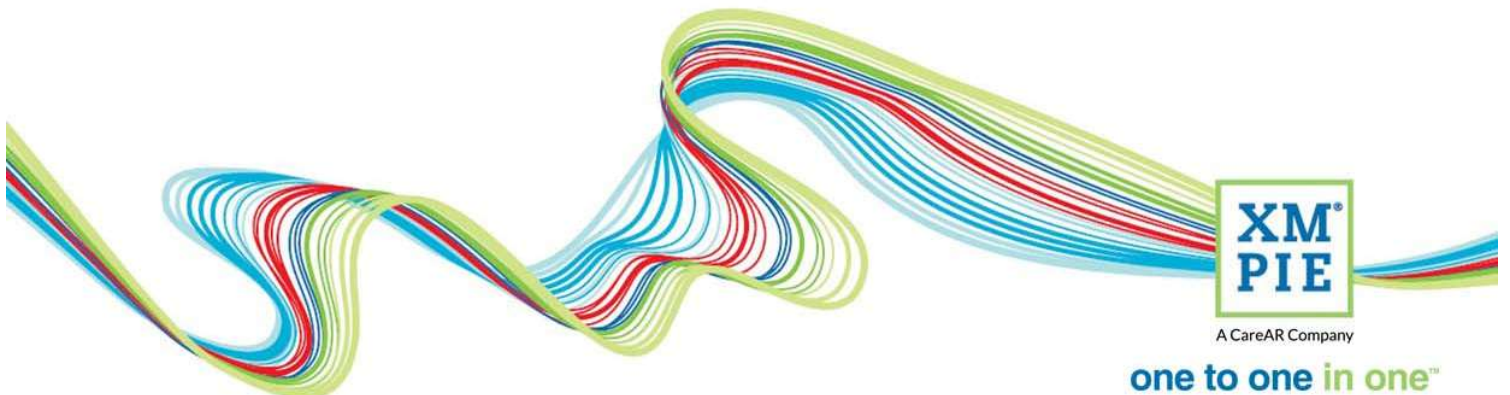
uCreate Print Training

Transcript for: Installation and orientation

Document version: v2

Software version: v11.3

Published date: September 2022



Notices

© 2022 XMPie®, A CareAR Company. All rights reserved.

U.S. Patents 6948115, 7406194, 7548338, 7757169 and pending patents.

JP Patent 4406364B and pending patents.

For information, contact XMPie Inc.

485 Lexington Avenue

25th. Floor

New York, NY 10017

More information can be found at www.xmpie.com

XMPie provides this publication "as is" without warranty of any kind, either express or implied. This publication may contain technical inaccuracies or typographical errors. While every precaution has been taken in the preparation of this document, the publisher and author assume no responsibility for errors or omissions. Nor is any liability assumed for damages resulting from the use of the information contained herein. Changes are periodically made to the information herein; these changes will be incorporated in new editions of the publication. XMPie may make improvements and/or changes in the product(s) and/or the program(s) described in this publication at any time.

XMPie, the XMPie logo, PersonalEffect, uChart, uCreate, uDirect, uEdit, uImage, uPlan, uProduce, uStore, StoreFlow, TransMedia, Circle, ADOR, XLIM, RURL, eMedia Cloud, and the slogan "one to one in one" are trademarks or registered trademarks of XMPie, A CareAR Company, and may not be used without permission. No part of these materials may be used or reproduced in any form, or by any means, without the express written consent of XMPie. To request permission to use these materials, please contact marketing@xmpie.com.

XEROX® and XEROX FreeFlow®, FreeFlow Output Manager® and FreeFlow Process Manager® are trademarks of Xerox Corporation in the United States and/or other countries.

Adobe Acrobat, Adobe Dreamweaver, Adobe Illustrator, Adobe InDesign, Adobe Photoshop and Adobe After Effects are trademarks of Adobe Systems Incorporated.

SQL Server, Windows Server, Windows, Microsoft Office, Microsoft Excel and Microsoft Access are trademarks or registered trademarks of Microsoft Corporation.

Mac OS is a trademark of Apple Computer, Inc.

ComponentArt is a trademark of ComponentArt Inc.

Other trademarks and service marks are the property of their respective owners.

Voice over script

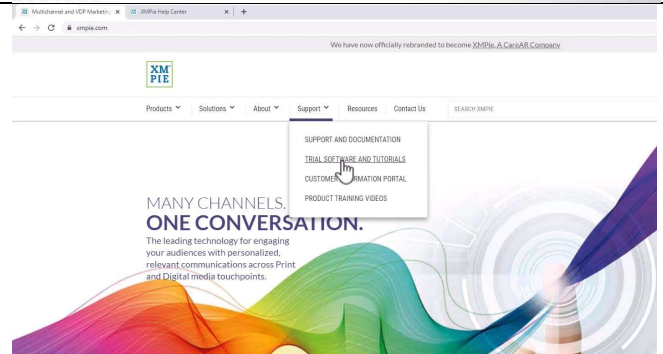
Hi! Welcome to XMPie uCreate Print training.

In this module we install uCreate Print and take our first look around the user interface.

Thumbnail

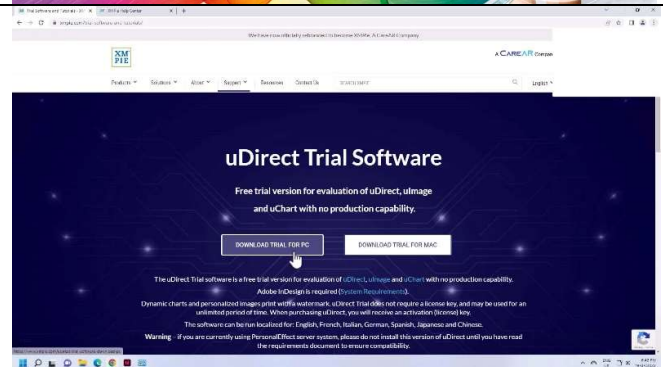


If you don't already have the installer, you can download it from the XMPie website. From the Support tab, select Trial Software and Tutorials.



Click to select the installer for either Macintosh or Windows.

Oh! You will notice that this page talks about uDirect. This is the name of the package that XMPie sells. uDirect Trial comes with uCreate Print, ulmage and uChart.

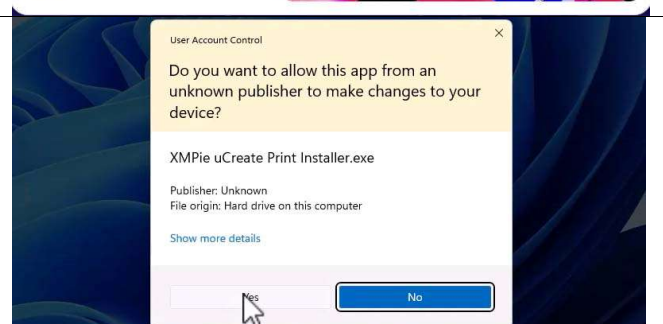


Before we run the installer, we need to check that a compatible version of Adobe InDesign is installed. In this case, I have InDesign CC2022.

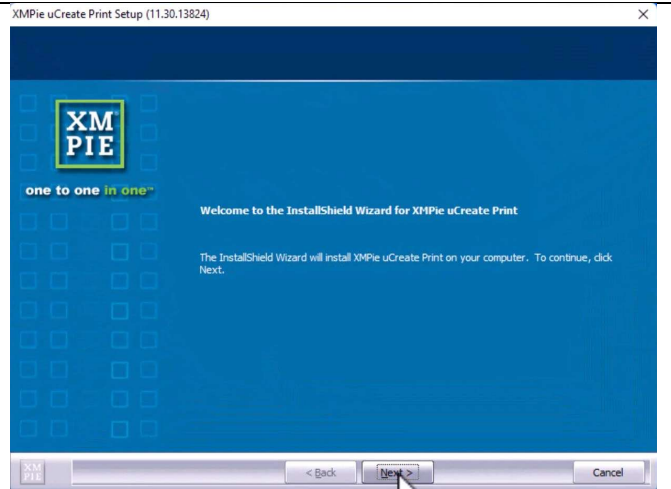
The current version of uCreate Print, version 11.3, supports only InDesign CC2022. If you have a different version of uCreate Print, it may support a different InDesign version. For exact details, refer to the release notes for your version. Release notes are available from <http://help.xmpie.com>



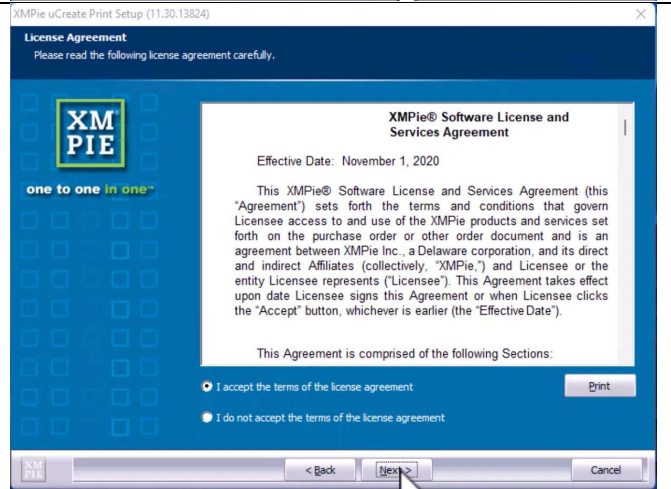
Quit InDesign, and run the installer. You must be an administrator on your computer.



It will not install correctly if you do not have administrator permissions.

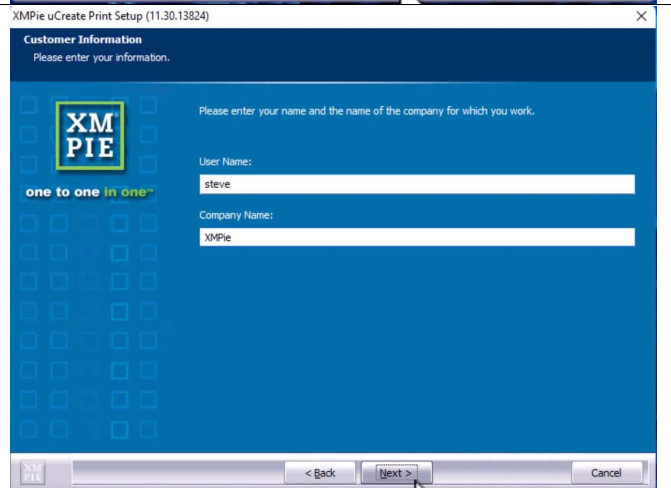


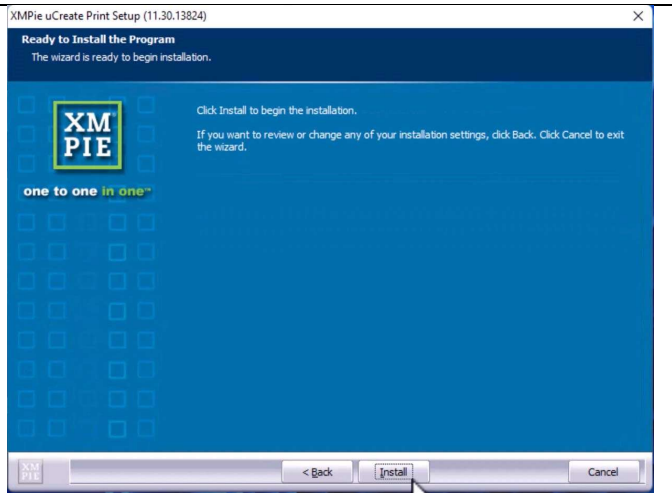
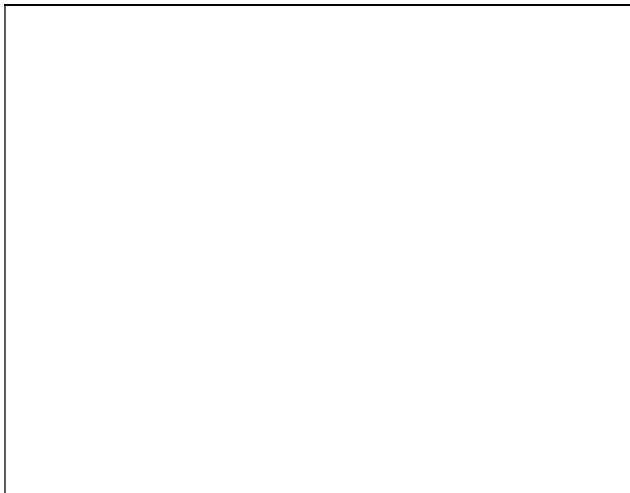
Read and agree to the license,



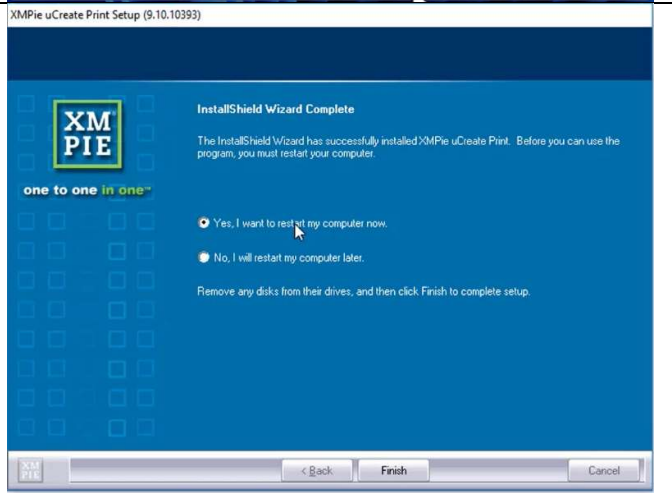
and enter your name and company. The installer is very basic with no configuration settings to make.

The installer will always add uCreate Print to the latest compatible version of InDesign that it finds on the computer. So, if you have multiple versions installed, uCreate Print will only be installed into the latest InDesign version.





It is recommended to reboot to make sure everything is setup correctly.

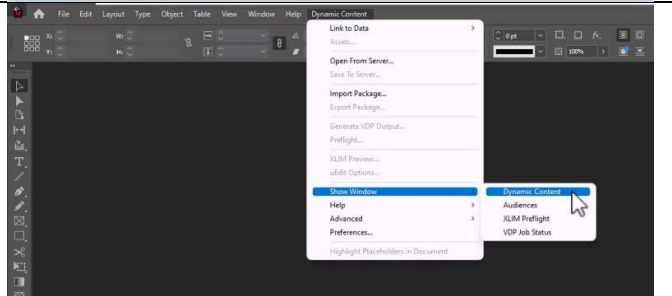


After restarting, open Adobe InDesign.

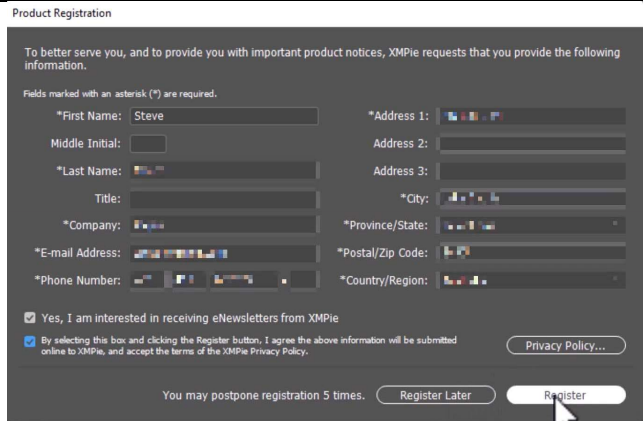
You can tell the installation was successful if you see "Dynamic Content" in the InDesign menu bar.

You can also open the Dynamic Content panel from this menu.

In addition to the Dynamic Content panel, there are also panels for Audiences, XLIM Preflight, and VDP Job Status. The last two are used when you also have the uProduce server which comes with the XMPie PersonalEffect package. The Audiences panel allows you to segment your data into different groups. There are separate videos about these tools later in this e-Learning course.



After activating, you will be asked to register. You can choose Register Later if you wish, but I recommend you to register and check the box to receive information from XMPie Marketing. There is only one newsletter each month and you can learn new tips and tricks as well as find announcements about new versions and upgrades.



Product Registration

To better serve you, and to provide you with important product notices, XMPie requests that you provide the following information.

Fields marked with an asterisk (*) are required.

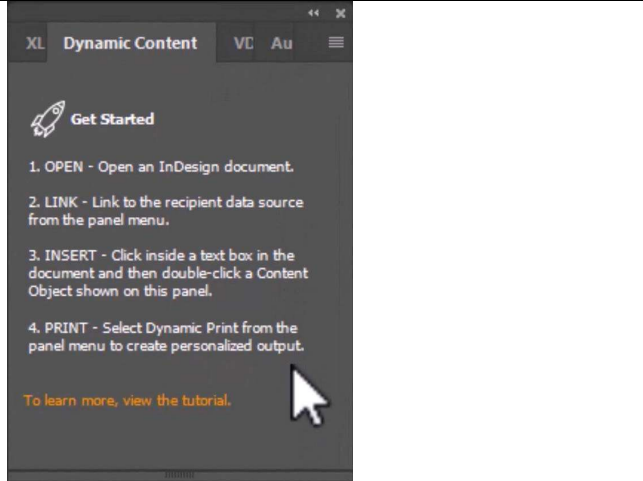
*First Name: Steve *Address 1: [Country Selector]
Middle Initial: [Text Box] Address 2: [Text Box]
*Last Name: [Country Selector] Address 3: [Text Box]
Title: [Text Box] *City: [Country Selector]
*Company: [Country Selector] *Province/State: [Country Selector]
*E-mail Address: [Country Selector] *Postal/Zip Code: [Country Selector]
*Phone Number: [Country Selector] *Country/Region: [Country Selector]

Yes, I am interested in receiving eNewsletters from XMPie
 By selecting this box and clicking the Register button, I agree the above information will be submitted online to XMPie, and accept the terms of the XMPie Privacy Policy. [Privacy Policy...](#)

You may postpone registration 5 times. [Register Later](#) [Register](#)

The Dynamic Content panel shows you the basic steps needed to get started – open a document, link to data, add content objects to the document, and dynamic print.

That's it! You are now setup and ready to continue with the following training modules or to start using the product.



Dynamic Content VC Au

Get Started

1. OPEN - Open an InDesign document.
2. LINK - Link to the recipient data source from the panel menu.
3. INSERT - Click inside a text box in the document and then double-click a Content Object shown on this panel.
4. PRINT - Select Dynamic Print from the panel menu to create personalized output.

[To learn more, view the tutorial.](#)