

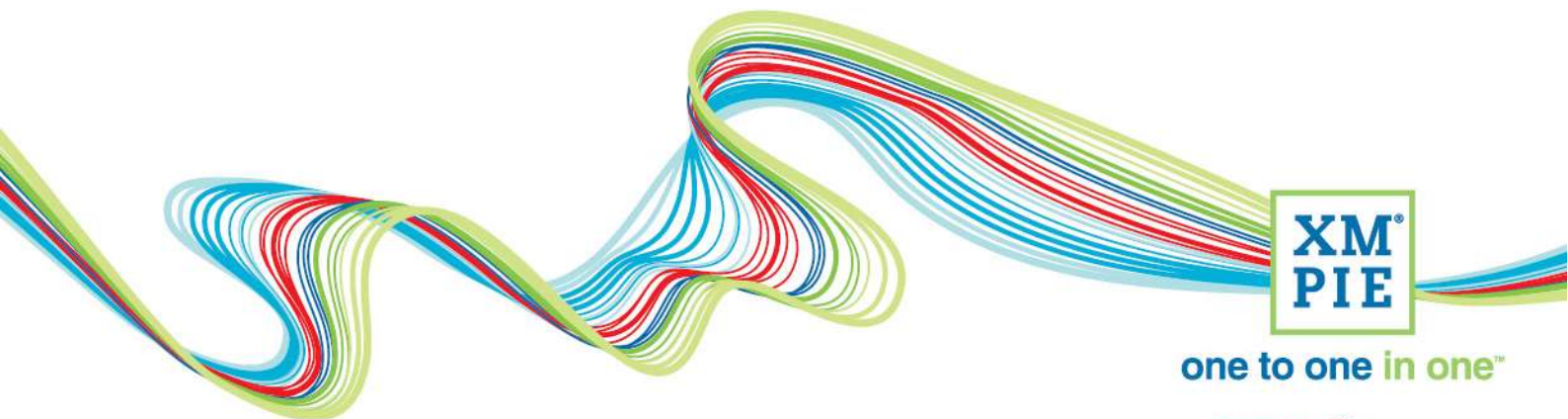
# XMPie Cross Media Training Series

Transcript for: Connecting a Circle project to uProduce

Document version: v2

Software version: v11

Published date: January 2022



one to one in one™

A **xerox**  Company

## Notices

© 2022 XMPie®, A Xerox Company. All rights reserved.

U.S. Patents 6948115, 7406194, 7548338, 7757169 and pending patents.

JP Patent 4406364B and pending patents.

For information, contact XMPie Inc.

485 Lexington Avenue

25th. Floor

New York, NY 10017

More information can be found at [www.xmpie.com](http://www.xmpie.com)

XMPie provides this publication "as is" without warranty of any kind, either express or implied. This publication may contain technical inaccuracies or typographical errors. While every precaution has been taken in the preparation of this document, the publisher and author assume no responsibility for errors or omissions. Nor is any liability assumed for damages resulting from the use of the information contained herein. Changes are periodically made to the information herein; these changes will be incorporated in new editions of the publication. XMPie may make improvements and/or changes in the product(s) and/or the program(s) described in this publication at any time.

XMPie, the XMPie logo, PersonalEffect, uChart, uCreate, uDirect, uEdit, ulmage, uPlan, uProduce, uStore, StoreFlow, TransMedia, Circle, ADOR, XLIM, RURL, eMedia Cloud, and the slogan "one to one in one" are trademarks or registered trademarks of XMPie, A Xerox Company, and may not be used without permission. No part of these materials may be used or reproduced in any form, or by any means, without the express written consent of XMPie. To request permission to use these materials, please contact [marketing@xmpie.com](mailto:marketing@xmpie.com).

XEROX® and XEROX FreeFlow®, FreeFlow Output Manager® and FreeFlow Process Manager® are trademarks of Xerox Corporation in the United States and/or other countries.

Adobe Acrobat, Adobe Dreamweaver, Adobe Illustrator, Adobe InDesign, Adobe Photoshop and Adobe After Effects are trademarks of Adobe Systems Incorporated.

SQL Server 2012, SQL Server 2008, SQL Server 2008 R2, Windows Server 2012, Windows Server 2012 R2, Windows Server 2008, Windows XP, Windows Vista, Windows 7, Windows 8, Microsoft Office, Microsoft Excel and Microsoft Access are trademarks or registered trademarks of Microsoft Corporation.

Mac OS is a trademark of Apple Computer, Inc.

ComponentArt is a trademark of ComponentArt Inc.

Other trademarks and service marks are the property of their respective owners.

## Voice over script

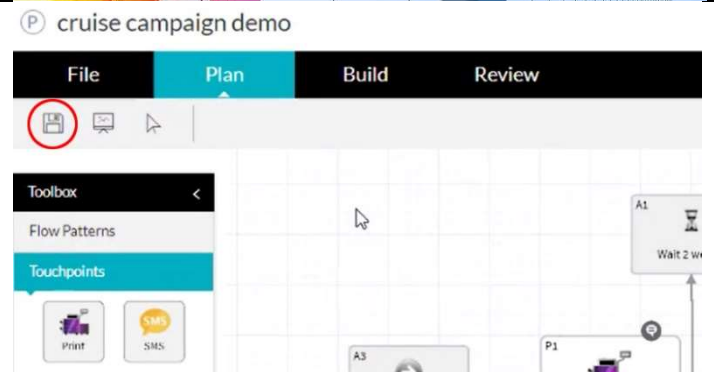
Hi! Welcome to XMPie PersonalEffect Cross Media.

In this tutorial we connect a Circle project to your uProduce server.

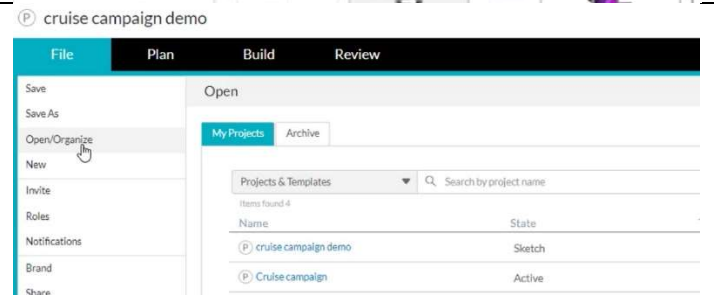
## Thumbnail



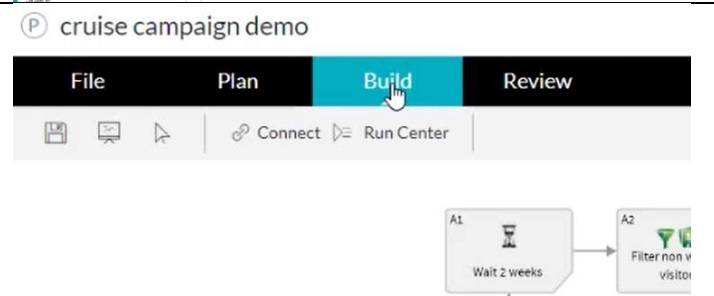
If you are continuing on immediately from the previous tutorial, simply save your Circle project.



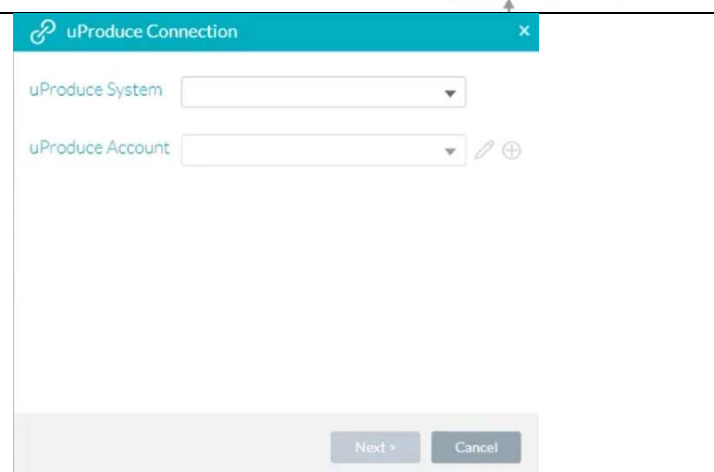
If you are coming back to the tutorial after some time, login to Circle, and open the project which you created earlier.



Click on the Build tab.  
Click the Connect button.

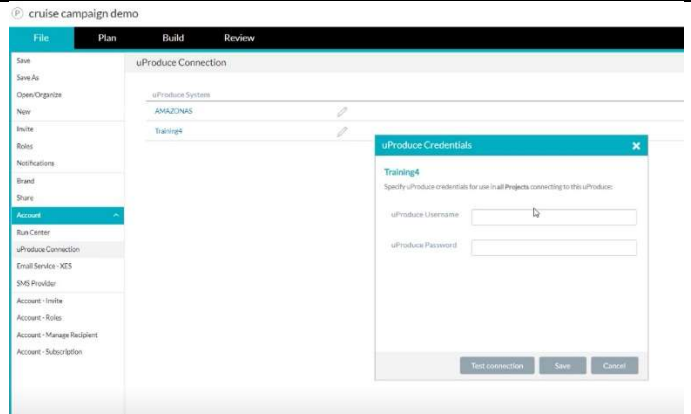


The first step is to select your uProduce server.



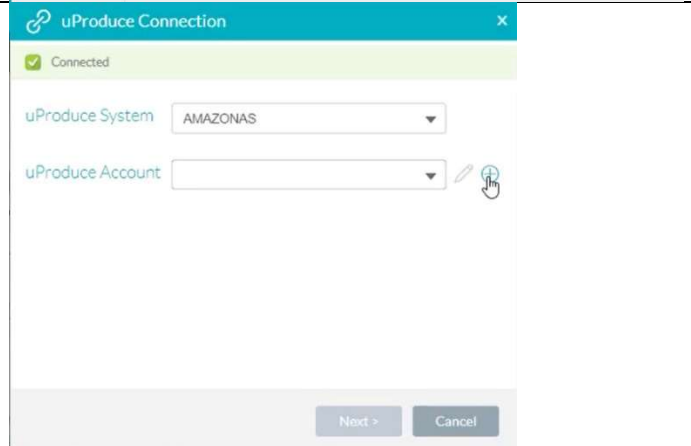
Circle will login to your uProduce server using the dashboard credentials that you enter here.

It is important to note that Circle will use the same login for all projects. So, it is recommended to create a special uProduce user for Circle to use that has access to all of the accounts necessary.

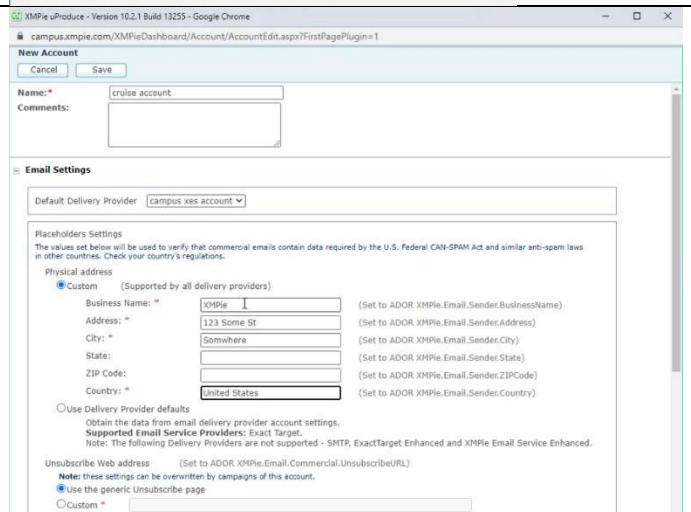


After selecting the uProduce server, Circle will display the available accounts in the next drop-down. You can click the + icon if you want to create a new account for this project.

Accounts are used to group different campaigns. In most cases, customers create an account for each of their clients. But you can use an account for each campaign, or use accounts to group campaigns for other reasons.



One of the things you can set on the account is the default email delivery provider and the sender address details.



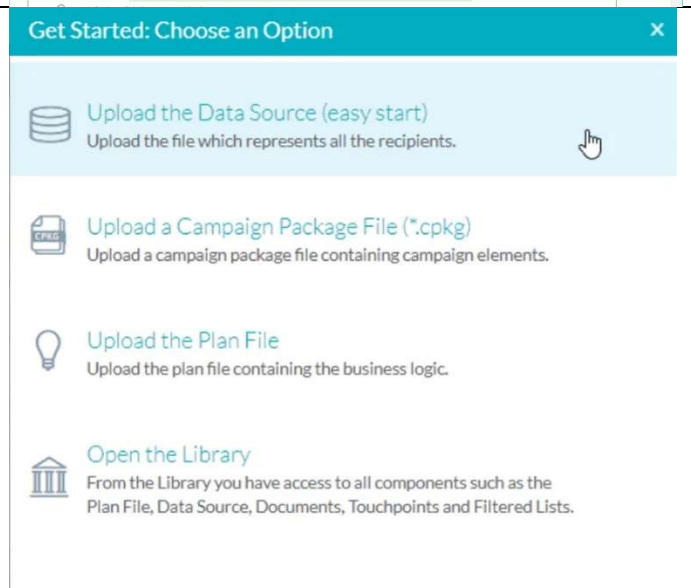
The next dialog provides you with some links to start setting up the campaign on your uProduce server.

You can upload a datasource – which will automatically create a basic plan for you. This option is very helpful if you want to get your campaign started quickly and don't have much logic to setup.

You can upload a campaign package that you created in InDesign with uCreate Print.

Or, you can upload a plan file that you created with uPlan or with uCreate Print. This option is normally best if you have many content objects or complex rules to setup before creating your documents.

The Library in Circle gives you access to upload and download the campaign plan, data sources, assets and



fonts.

It is important to note that even though Circle is a cloud-based application, these options link directly to your uProduce server. The plan, data, and other components are sent directly to your local server and are not stored in the cloud.