

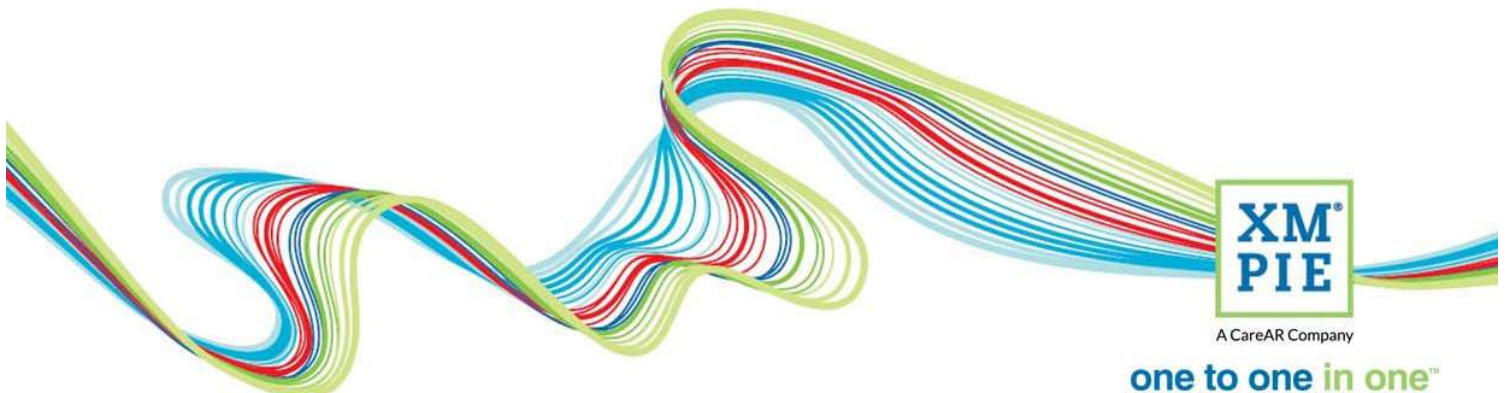
uCreate Print Training

Transcript for: Getting started

Document version: v3

Software version: v12.1

Published date: March 2023



Notices

© 2023 XMPie®, A CareAR Company. All rights reserved.

U.S. Patents 6948115, 7406194, 7548338, 7757169 and pending patents.

JP Patent 4406364B and pending patents.

For information, contact XMPie Inc.

485 Lexington Avenue

25th. Floor

New York, NY 10017

More information can be found at www.xmpie.com

XMPie provides this publication "as is" without warranty of any kind, either express or implied. This publication may contain technical inaccuracies or typographical errors. While every precaution has been taken in the preparation of this document, the publisher and author assume no responsibility for errors or omissions. Nor is any liability assumed for damages resulting from the use of the information contained herein. Changes are periodically made to the information herein; these changes will be incorporated in new editions of the publication. XMPie may make improvements and/or changes in the product(s) and/or the program(s) described in this publication at any time.

XMPie, the XMPie logo, PersonalEffect, uChart, uCreate, uDirect, uEdit, ulmage, uPlan, uProduce, uStore, StoreFlow, TransMedia, Circle, ADOR, XLIM, RURL, eMedia Cloud, and the slogan "one to one in one" are trademarks or registered trademarks of XMPie, A CareAR Company, and may not be used without permission. No part of these materials may be used or reproduced in any form, or by any means, without the express written consent of XMPie. To request permission to use these materials, please contact marketing@xmpie.com.

XEROX® and XEROX FreeFlow®, FreeFlow Output Manager® and FreeFlow Process Manager® are trademarks of Xerox Corporation in the United States and/or other countries.

Adobe Acrobat, Adobe Dreamweaver, Adobe Illustrator, Adobe InDesign, Adobe Photoshop and Adobe After Effects are trademarks of Adobe Systems Incorporated.

SQL Server, Windows Server, Windows, Microsoft Office, Microsoft Excel and Microsoft Access are trademarks or registered trademarks of Microsoft Corporation.

Mac OS is a trademark of Apple Computer, Inc.

ComponentArt is a trademark of ComponentArt Inc.

Other trademarks and service marks are the property of their respective owners.

Voice over script

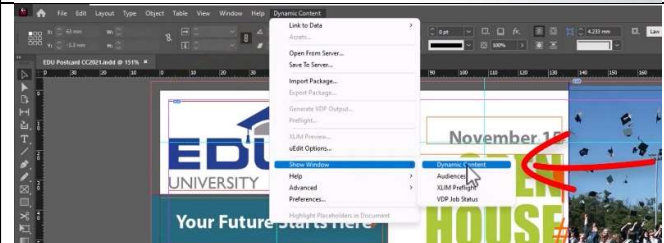
Hi! Welcome to XMPie uCreate Print training.

In this series of videos, we explore uCreate Print and how to create VDP or Variable Data Print templates in InDesign.

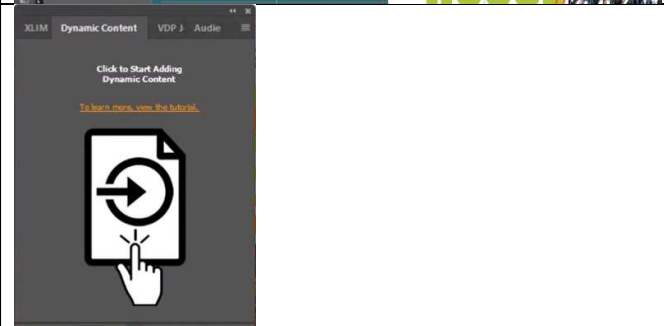
Thumbnail



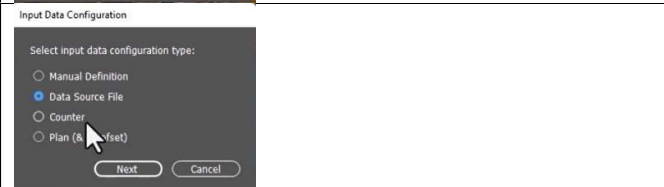
For those who want to get straight into it and experiment on their own: After installing uCreate Print, simply open an InDesign document and open the Dynamic Content panel from the menu of the same name.



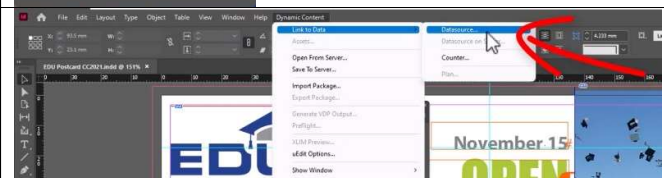
Click the button on the panel.



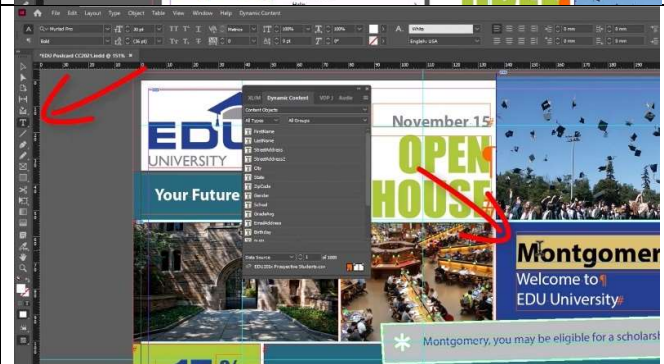
In most cases you will want to connect with a datasource, but you can use a simple counter, a plan file, or use manual definition to manually setup the structure of the data that you will connect with later on.



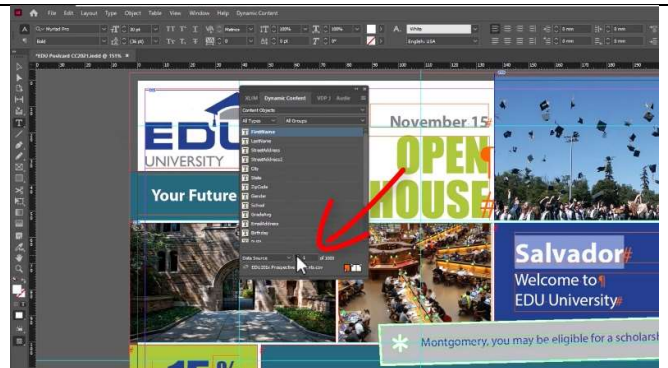
When it is connected, you will see all the columns or fields ready to place into the document.



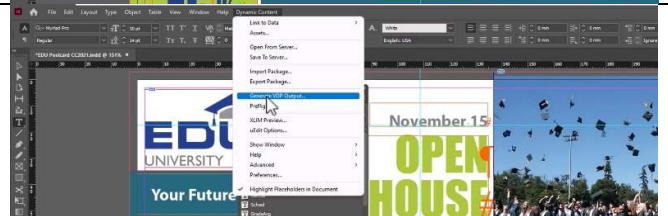
Use the InDesign Text tool to select where you want the database values to appear, and double-click the content object in the Dynamic Content panel.



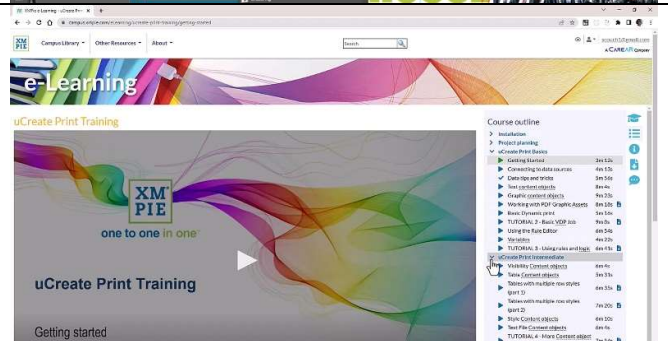
You can scroll through your database records and see the design change in true WYSIWYG style.



When happy with your setup, you can create the final print output file by selecting **Generate VDP Output** from the **Dynamic Content** menu.



There is a lot more you can do with uCreate Print and you can explore by yourself, or refer to other videos in this training course.

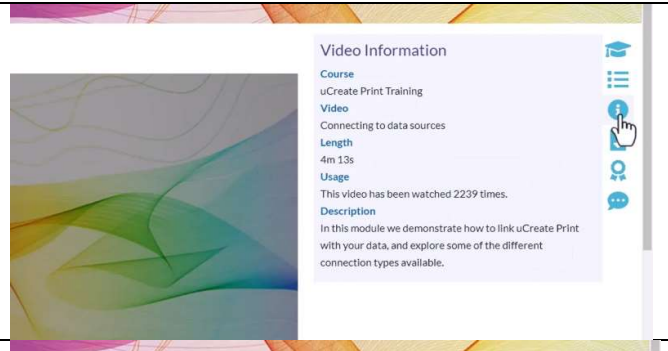


The training is separated into different sections. Simply click on the section to view the available topics.

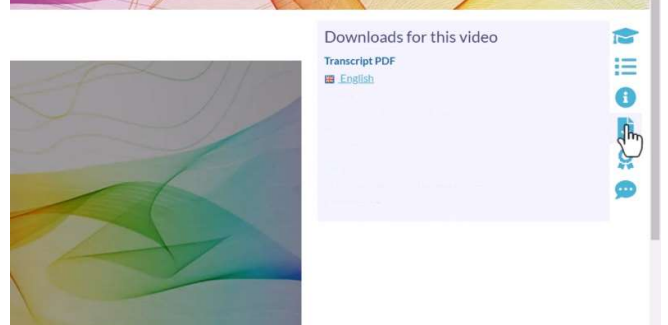
When you click on a module, the selected video will load into the main area.

The green play icon highlights the module which is currently being displayed. The tick icon shows that you have watched this module previously, and the blue play icon shows modules which have not been watched.

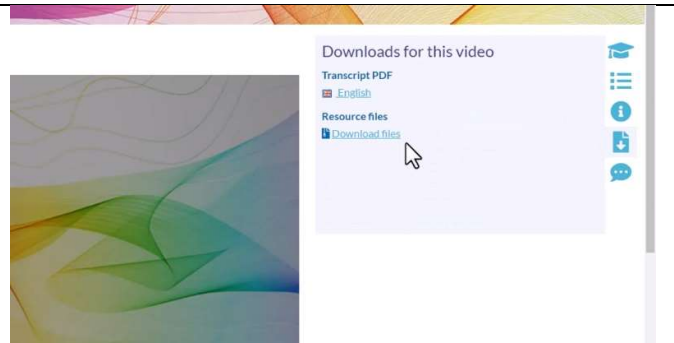
Here, you can find more information about the currently selected module.



And the download tab has a link to download a complete PDF transcript of the video that you can refer to later.

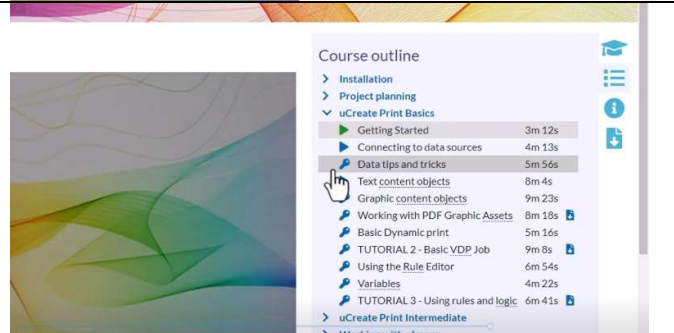


In addition, the Tutorial modules have a Resources ZIP file that includes the sample documents and materials used in the video, so you can download and work through the same example.



You can view the videos in any sequence and jump to the topic you need, skipping the ones you don't.

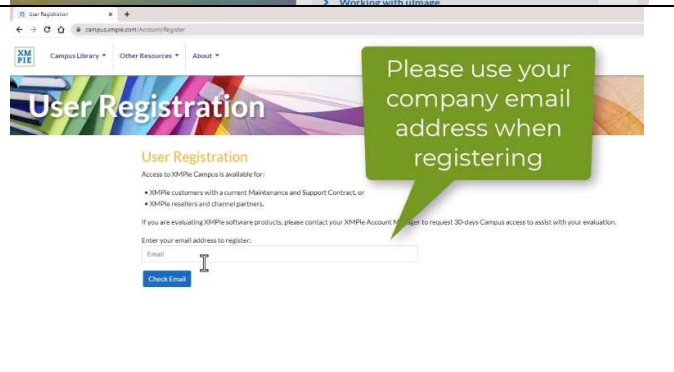
If you see this lock icon, then you need to login to see these modules.



If you don't have credentials, just use the registration form. Access to Campus is one of the benefits of your XMPie annual support and maintenance contract.

Please enter your company email address to help us identify your company's support contract or partner status.

If there is a problem setting up your account straight away, an email explaining the problem will be sent to the email address you entered.



New training topics are added over time, so check back for new and updated materials from time to time.

Also, if you can't find what you want, use the feedback form, and we will try to create something new, or point you towards existing materials.

